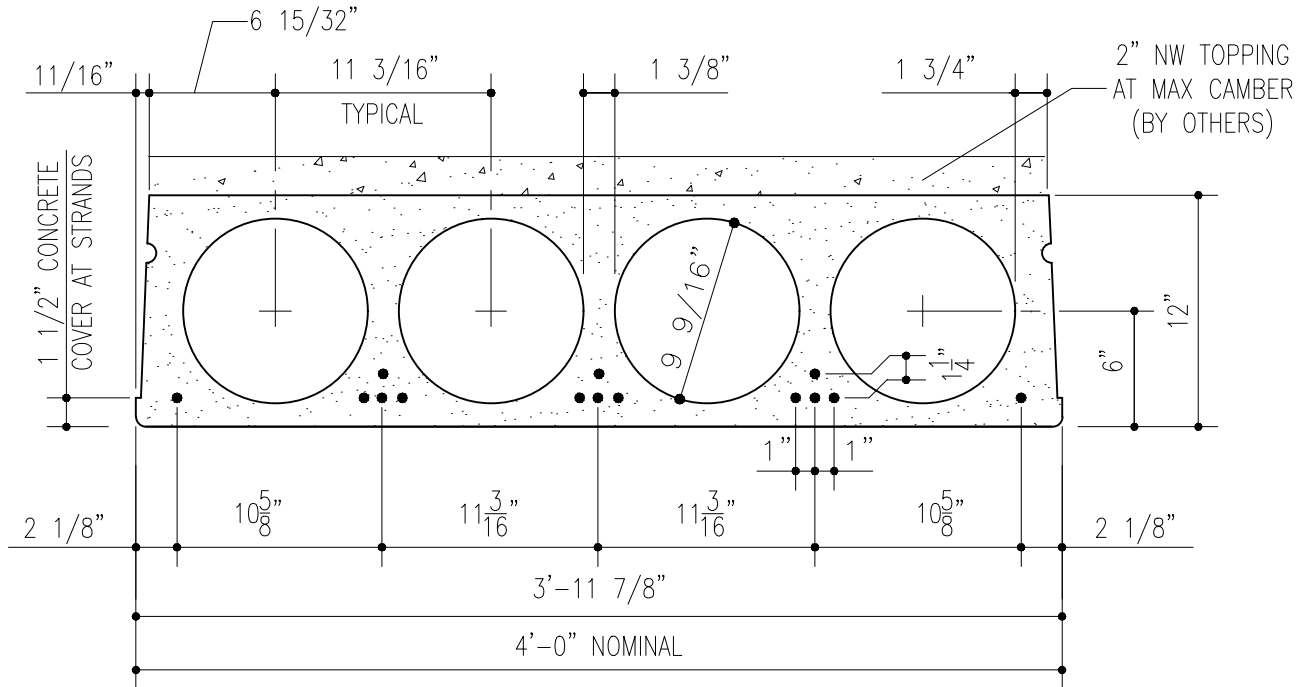




12" CELLA-CORE TECHNICAL DATA SHEET



LOAD TABLE OF ALLOWABLE SUPERIMPOSED LOADS IN LBS. PER SQ.FT.																											
STANDARD WEIGHT 12" CELLA-CORE PLANK + 2" NW CONCRETE COMPOSITE TOPPING																											
STRAND	STRAND AREA sq. in.	MU K-ft	CLEAR SPAN IN FEET																								
			30	31	32	33	34	35	36	37	38	39	40	41	42	43	44	45	46	47	48	49	50	51	52	53	54
6-1/2" ϕ	0.918	212	206	197	182	166	152	139	127	116	106	97	89	81	73	66	60	54	48								
8-1/2" ϕ	1.224	275	206	197	188	180	172	165	159	152	146	140	135	128	118	109	101	93	86	79	72	66	61	55	50	46	41
10-1/2" ϕ	1.530	336	206	197	188	180	172	165	159	152	146	140	135	130	125	120	116	111	107	103	100	96	91	84	78	72	67

Values below lower heavy line indicate web shear controls.
 Values above upper heavy line indicate long-time camber less than zero with no superimposed loads.

MATERIAL PROPERTIES			
Net Area.....	341.10 in ²	Strength of Concrete (f 'c).....	6000 psi
Moment of Inertia.....	7975.70 in ⁴	Strength at Release (f 'ci).....	3500 psi
Centroid from Slab Bottom.....	7.35 in	Unit weight of Concrete.....	150 pcf
Section Modulus, Top.....	1715.02 in ³	Ultimate Steel Strength.....	270 ksi
Section Modulus, Bottom.....	1199.27 in ³	Strand Jacking Stress.....	202.5 ksi
Web Width.....	8.50 in	Strand Type.....	Low Relaxation
V/S Ratio.....	2.47 in	Grout Joint Requirements.....	1161 ft ² /yd ³
Self Weight *.....	102.1 pcf	* Self weights based on grouted section	

These tables are for general descriptive purposes only. Actual Cella-Core designs are dependant on local codes and standards, material properties and product end usage.