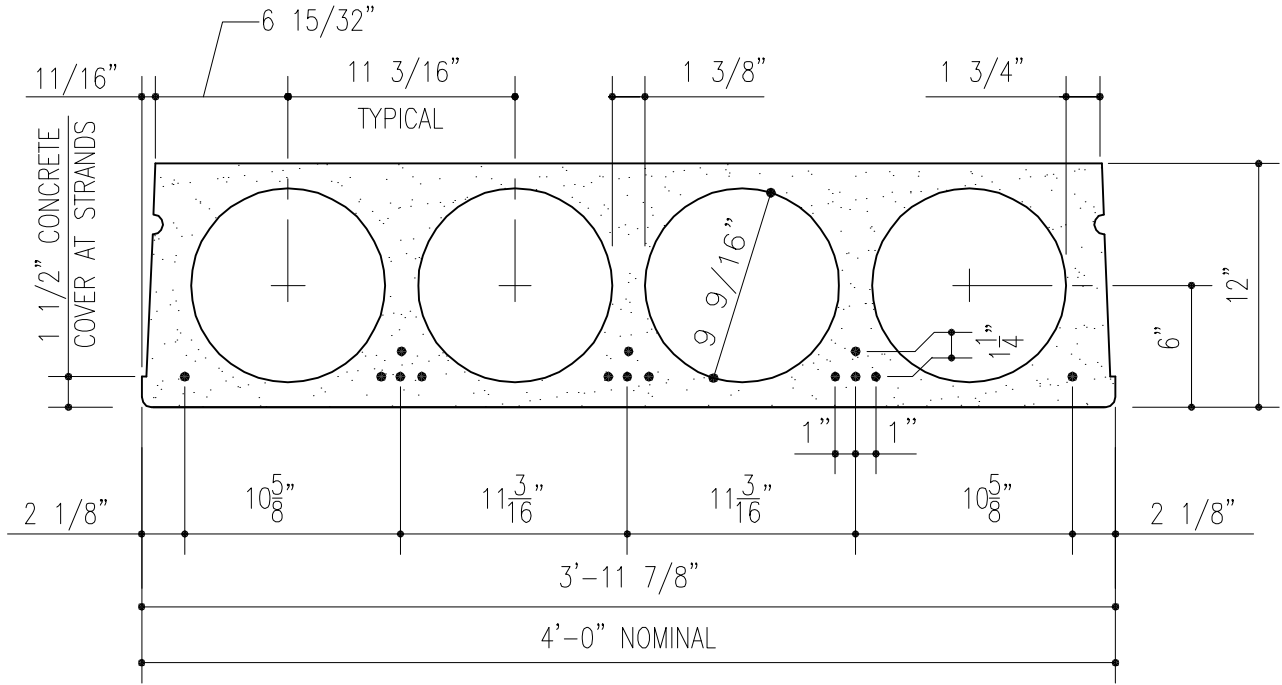




# 12" CELLA-CORE TECHNICAL DATA SHEET



## LOAD TABLE OF ALLOWABLE SUPERIMPOSED LOADS IN LBS. PER SQ.FT.

### STANDARD WEIGHT 8" CELLA-CORE PLANK

STRAND	STRAND AREA sq. in.	MU K-ft	CLEAR SPAN IN FEET																									
			30	31	32	33	34	35	36	37	38	39	40	41	42	43	44	45	46	47	48	49	50	51	52	53	54	
4-1/2" $\phi$	0.612	115	90	80	72	64	57	50	44	38	33	50	44	39														
5-1/2" $\phi$	0.765	142	125	114	103	93	84	76	69	62	55	70	64	58	52	47	42											
6-1/2" $\phi$	0.918	169	161	147	134	122	112	102	93	85	77	91	84	77	70	64	59	54	49	44	40							
7-1/2" $\phi$	1.071	196	165	153	147	144	136	128	118	108	99	91	84	77	70	64	59	54	49	44	40							
8-1/2" $\phi$	1.224	220	172	161	154	150	143	139	132	129	119	110	101	94	86	80	73	67	62	57	52	47	43					
9-1/2" $\phi$	1.377	246	178	169	161	156	149	145	142	136	132	127	121	112	104	96	89	83	76	71	65	60	55	51	47	43		
10-1/2" $\phi$	1.530	266	183	173	163	159	153	147	144	138	135	131	127	126	117	109	101	94	88	81	75	70	65	60	55	51	47	
11-1/2" $\phi$	1.683	288																107	100	93	87	81	75	70	65	60	56	

Values below lower heavy line indicate web shear controls.

Values above upper heavy line indicate long-time camber less than zero with no superimposed loads.

## MATERIAL PROPERTIES

Net Area.....	275.34 in <sup>2</sup>	Strength of Concrete ( f 'c ).....	6000 psi
Moment of Inertia.....	5352.7 in <sup>4</sup>	Strength at Release ( f 'ci ).....	3500 psi
Centroid from Slab Bottom.....	6.00 in	Unit weight of Concrete.....	150 pcf
Section Modulus, Top.....	892.12 in <sup>3</sup>	Ultimate Steel Strength.....	270 ksi
Section Modulus, Bottom.....	892.12 in <sup>3</sup>	Strand Jacking Stress.....	202.5 ksi
Web Width.....	8.50 in	Strand Type.....	Low Relaxation
V/S Ratio.....	2.47 in	Grout Joint Requirements.....	1161 ft <sup>2</sup> /yd <sup>3</sup>
Self Weight *.....	77.1 psf	* Self weights based on grouted section	

These tables are for general descriptive purposes only. Actual Cella-Core designs are dependant on local codes and standards, material properties and product end usage.