

DUE TO PLANK CAMBER JOINT HERE MUST BE FEATHERED IN FIELD DURING GROUTING INSTALLATION

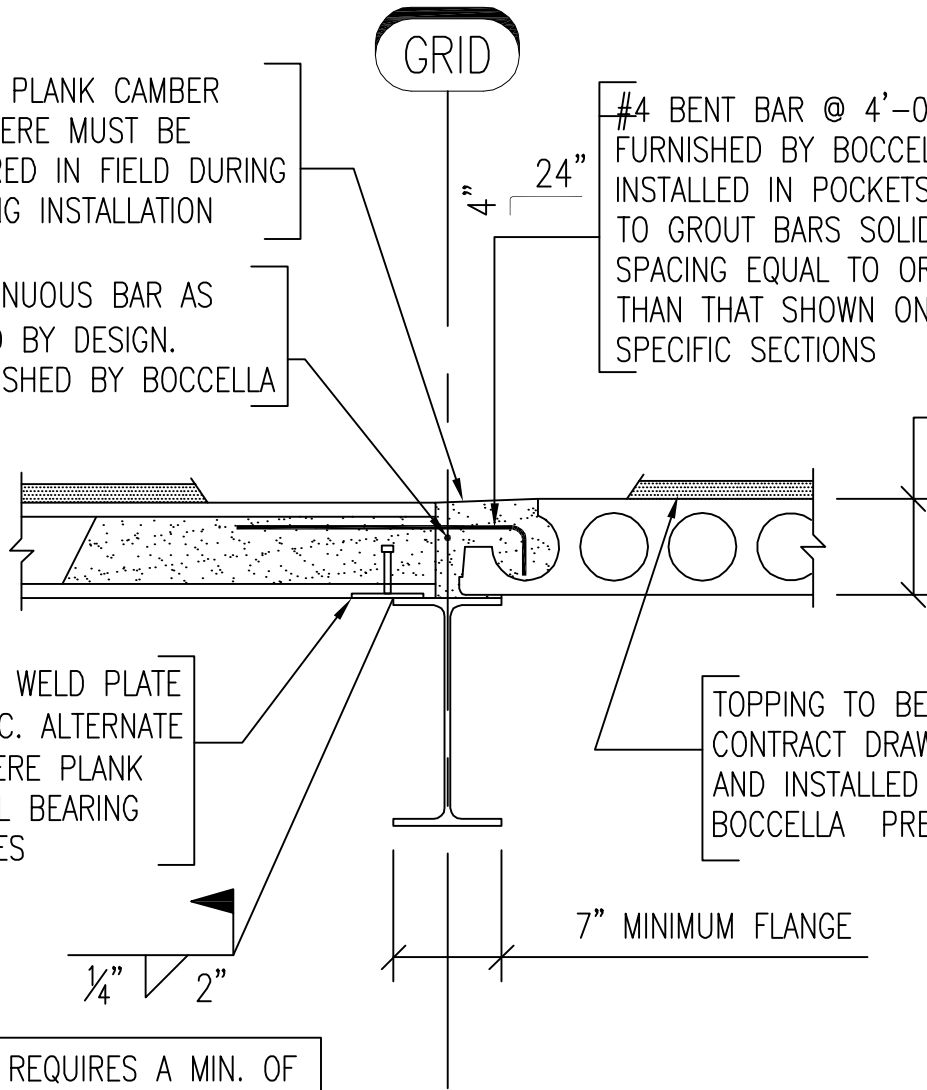
CONTINUOUS BAR AS REQ'D BY DESIGN. FURNISHED BY BOCCELLA

#4 BENT BAR @ 4'-0" O.C. FURNISHED BY BOCCELLA, INSTALLED IN POCKETS. INSTALLER TO GROUT BARS SOLID. MAINTAIN SPACING EQUAL TO OR LESS THAN THAT SHOWN ON PROJECT SPECIFIC SECTIONS

8" 10" or 12"  
CELLA CORE PLANK

STANDARD WELD PLATE @ 48" O.C. ALTERNATE ENDS WHERE PLANK HAS STEEL BEARING BOTH SIDES

TOPPING TO BE SPECIFIED BY CONTRACT DRAWINGS, FURNISHED AND INSTALLED BY OTHERS, NOT BOCCELLA PRECAST

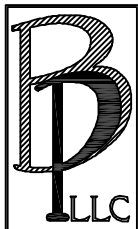


PLANK REQUIRES A MIN. OF 2 1/2" BEARING ON STEEL

**NOTES:**

IT IS STANDARD INDUSTRY PRACTICE TO ONLY WELD ONE END OF A PIECE OF HOLLOWCORE PLANK. WELDING BOTH ENDS OF A PLANK WILL RESULT IN VOLUME CHANGE RESTRAINT FORCES THAT MUST BE CONSIDERED IN THE DESIGN OF THE CONNECTION. IF WELD PLATES MUST BE USED, BOCCELLA PRECAST RECOMMENDS WELDING ALTERNATE ENDS OF THE PLANK, OTHERWISE THE ENGINEER OF RECORD IS TO PROVIDE ALL FORCES FOR CONNECTION DESIGN.

June 2009



**Boccella Precast, LLC**

324 New Brooklyn Road  
Berlin, New Jersey 08009

Phone: (856) 767-3861 Fax: (856) 767-7228  
www.boccellaprecast.com

**STANDARD DESIGN CATALOG**

DRAWING DESCRIPTION:

**CHANGE OF DIRECTION ON STEEL BEAM**

SCALE:

3/4" = 1'-0"

CATALOG:

**PAGE 13**