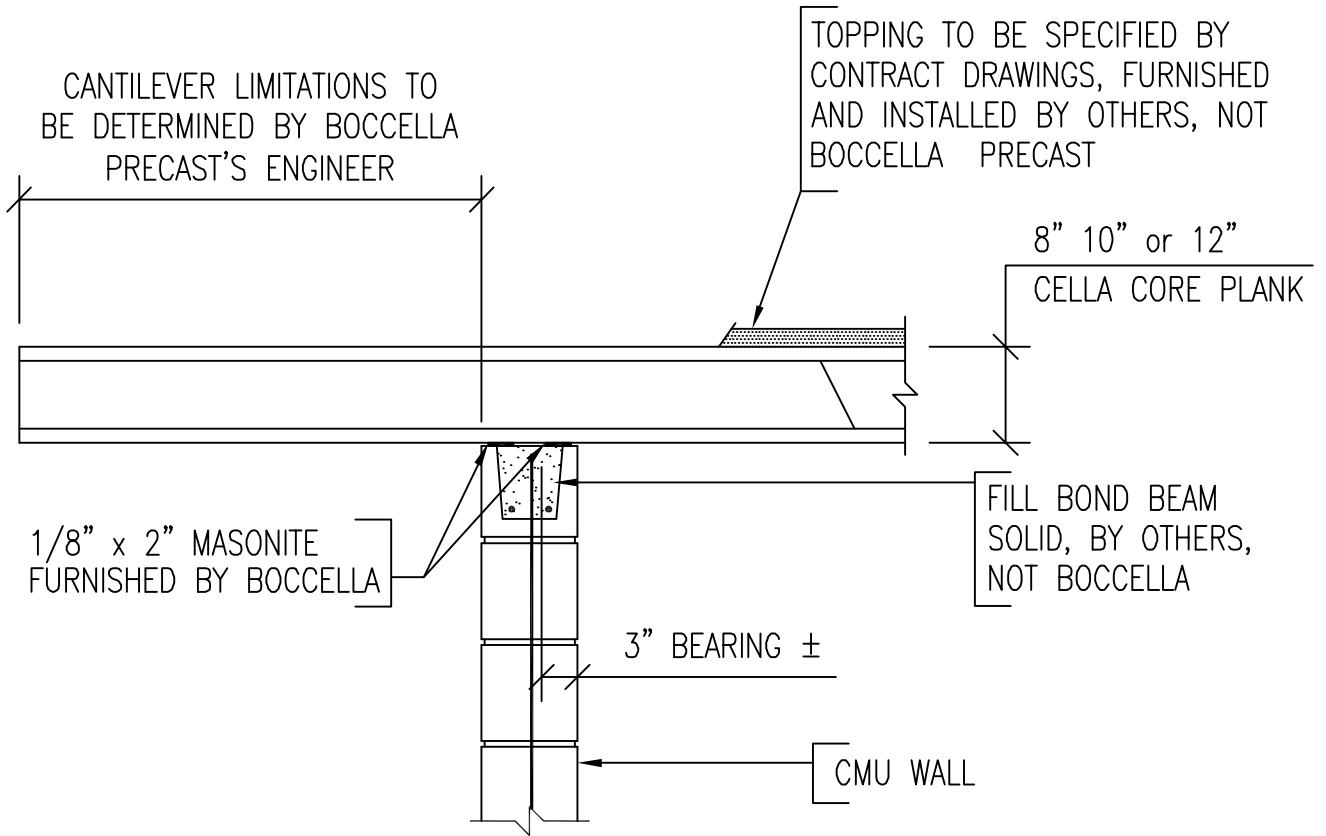


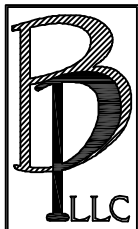
DO NOT EXPOSE ANY  
HOLLOWCORE PLANKS  
TO WEATHER



**NOTES:**

SMOOTH, CLEAN AND LEVEL BEARING SURFACES ARE REQUIRED FOR PROPER PLANK INSTALLATION. WALLS TO BE FURNISHED AND INSTALLED BY CUSTOMER OR THEIR GENERAL CONTRACTOR, NOT BOCCELLA. NO WALLS, PIPES, CONDUIT OR OTHER FIXTURES ARE TO EXTEND ABOVE THE PRECAST BEARING SURFACE UNTIL THE PLANKS HAVE BEEN SET INTO THEIR FINAL DESIGNED POSITION.

June 2009



**Boccella Precast, LLC**

324 New Brooklyn Road  
Berlin, New Jersey 08009

Phone: (856) 767-3861 Fax: (856) 767-7228  
www.boccellaprecast.com

**STANDARD DESIGN CATALOG**

DRAWING DESCRIPTION:

**TYPICAL CANTILEVER ON CMU WALL  
EXTERIOR / INTERIOR WALL**

SCALE:

**3/4" = 1'-0"**

CATALOG:

**PAGE 9**